



JudE - Technology

JudE Objective: Improve the care experience, care responsiveness, and care peace of mind -- for patients, caregivers, facilities, and family members -- *by leveraging modern and mobile technology to improve the notification, workflow, and resolution of patient, caregiver and facility requests.*



Modern Technology



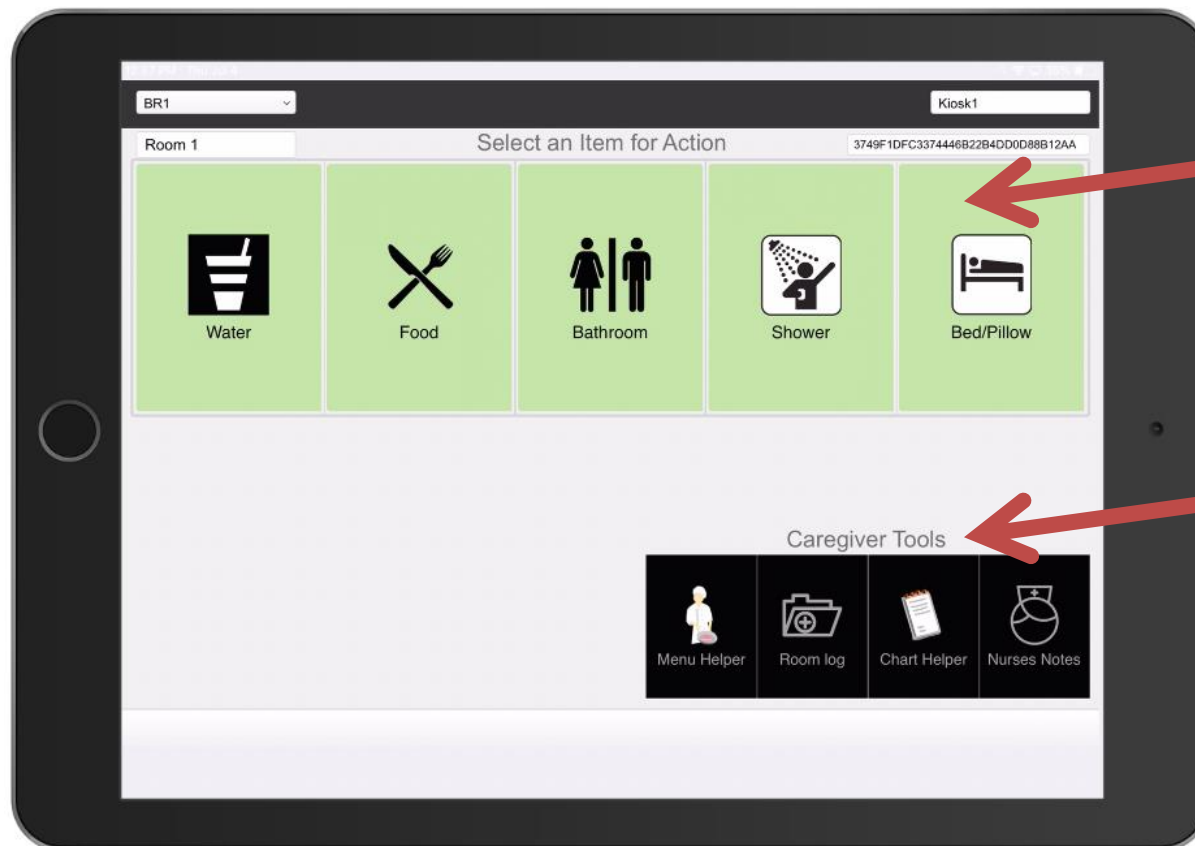
- Cloud Software as a Service for simple install and simple support
- Kiosk in the patient's room with an easy to use iPad application
- Central database keeps track of all the activities for all the rooms
- Central application allows facilities or nurses to view a facility room block at a glance
- The central database can also facilitate instant notifications to caregiver's mobile devices



The Room Kiosk



- It all starts with the iPad Kiosk



- Patients or caregivers can interact with icons at the top
- Caregivers have additional functionality with the icons at the bottom



The Room Kiosk



- The Kiosk can be mounted on the wall, on an arm, or a portable stand that can be positioned by the bed, or anywhere in the room.



The Central Monitor



RoomID	Device	Connected	Last Connected	Current Request	Open Time	Last Request	Time to resolve
001	Ipad Mini Kiosk	Disconnected	3/22/2019 5:47:52 PM	Good. No Request	0:00:00	Water	0:00:15
BR1	Dennis' Laptop	Disconnected	6/15/2019 1:31:26 PM	Good. No Request	0:00:00	Food	0:00:07
BR1	Kiosk1	Connected	7/4/2019 1:01:32 PM	Good. No Request	0:00:00	Water	0:00:01
BR11	Dennis' iPhone	Disconnected	7/20/2018 9:03:19 PM	Good. No Request	0:00:00	Bed/Pillow	0:00:16
K1	Admin Desktop	Connected	7/4/2019 1:14:59 PM	Good. No Request	0:00:00	Water	0:00:11
K1	Dennis' iPhone X	Disconnected	3/9/2019 6:49:33 PM	Good. No Request	0:00:00	Food	0:00:15
K1	App - Dennis'	Disconnected	6/28/2019 11:22:04 AM	Good. No Request	0:00:00	Bathroom	0:00:27
RM1	Kiosk1	Disconnected	3/13/2019 8:21:36 AM	Good. No Request	0:00:00	Food	0:00:15
RM2	Kiosk 3 Mini	Disconnected	9/17/2018 3:33:38 PM	Good. No Request	0:00:00	Food	0:00:13
RM2	Kiosk 2 Mini	Disconnected	11/17/2018 10:12:39 PM	Good. No Request	0:00:00	Bathroom	0:01:20

- Can be a computer monitor or connected display (TV)
- This is one of the views that shows status for a block of rooms at a glance



Other Mobile Devices



- Mobile phones can receive text messages.



- Messages from the app are kept generic. No Personal or Identifiable information is sent.
- The text feature is optional, however JudE can send texts to one or many phone numbers depending on your staff and communication needs



App and Data Security



- The application and database requires multifactor authentication.
 - As with online bank access, first a device must be registered to access the app or database. Additionally, an Admin must accept each specific device.
- Devices are assigned specific functions. Any device other than a room Kiosk has additional login/password required
- Even on the room Kiosk, other than patient requests, all other functions require a user electronic signature / PIN to complete.



App and Data Security



- The data itself is encrypted on the device, in transit and at rest in the database.
- The database / servers are in Amazon Web Services – which have world-class security



Data Purging



- The JudE app and database is intended to groom and purge data frequently.
- JudE is NOT intended to replace recording and logging into your patient data or compliance system.
- Use JudE to assist with the daily tasks and to help recall information to put into your formal tracking system.
- Various app data can be configured to purge between 1-30 days. Once purged, the data cannot be recovered.



JudE Deployment



- No onsite servers.
- Low investment onsite setup. Equipment is simple iPad kiosks and optional PC's and monitors for nursing station (nursing station and admin functions also available via iPad)
- Facility/Site specific app configuration can be done with very little IT Knowledge
- JudE team can do and support virtually all app configuration setup and support without coming onsite
- Bug fixes and new features can be available automatically without the JudE team coming onsite



JudE Technology

Recap



- Modern Technology
- Fast and Inexpensive to deploy, and support
- Patients, Caregivers, and Facilities will love the helpful functionality to improve their Experience, Efficiency and Effectiveness
- See other videos for screenshots and application functionality overviews

