



JudE - Chart Helper

JudE Objective: Improve the care experience, care responsiveness, and care peace of mind -- for patients, caregivers, facilities, and family members -- **by leveraging modern and mobile technology to improve the notification, workflow, and resolution of patient, caregiver and facility requests.**



Chart Helper

- Available under Caregiver Tools on the Room Kiosk

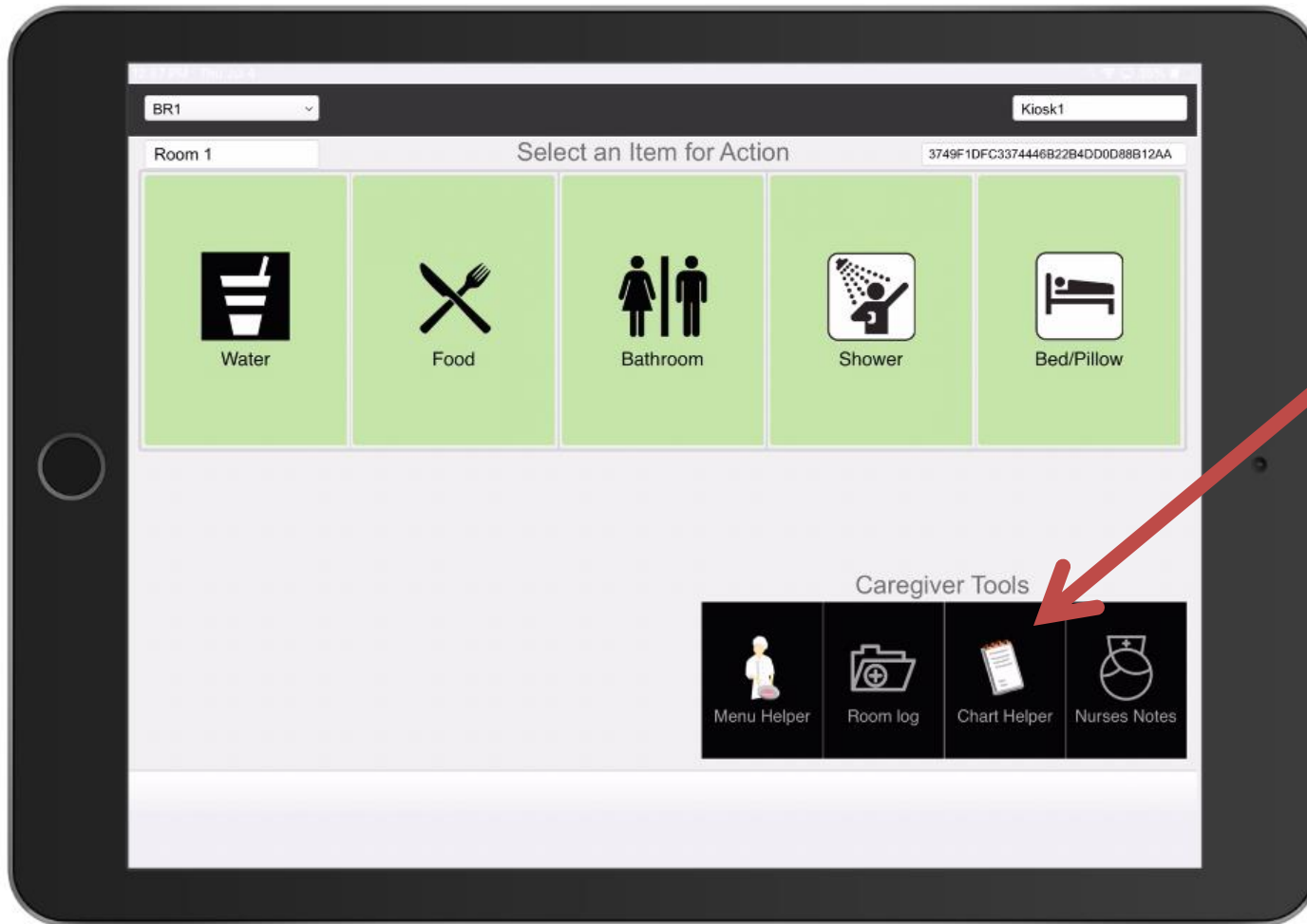


Chart Helper

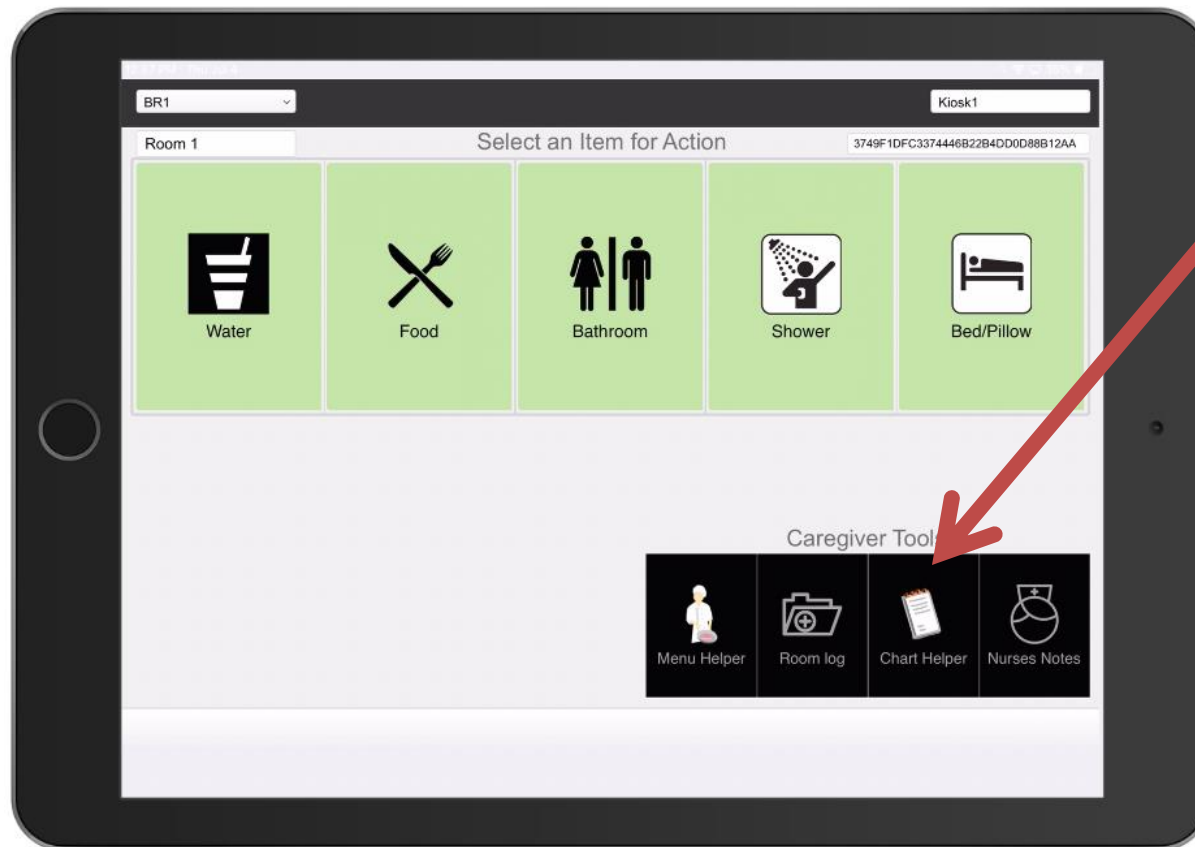
Basic Steps



- Caregiver presses “Chart Helper” icon from the Room Kiosk, and the Caregiver “Signs In”
 - All Caregivers will be assigned a unique ID & Passcode
- The Chart Helper screen will guide the Caregiver through capturing relevant information.
- Touch the “OK” button to generate a Chart Log for the room
 - Chart Log: A summary read-out of everything that happens in a patient’s room during a day
 - The Chart Log is accessed by pressing “Room Log” under Caregiver Tools on the Room Kiosk
 - The Chart Log can also be viewed at the Nurses Station/Central Monitor by pressing the “Go To Charts” button
- A summary of all Logs can be viewed by the Room Kiosk and the Nurses Station/Central Monitor



Chart Helper



- Start here
- Must log in with Caregivers unique ID and Pass Code

Enter PIN

Please input your Caregiver PIN

Caregiver UserID
3405

PIN
0

Cancel OK



Chart Helper



- Chart Helper screen captures Relevant Information

<<Back (Cancel)

Room: K1 Caregiver: 3405 Date/Time: 10/7/2018 7:57:39

ADL Category

- ☐ Bed Mobility
- ☒ Dressing
- ☐ Eating
- ☐ Locomotion off unit
- ☐ Locomotion on unit
- ☐ Personal Hygiene
- ☐ Toilet Use
- ☐ Transfer
- ☐ Walk in Corridor
- ☐ Walk in Room
- ☐ zz - Take Vitals

ADL Self Performance

9

0 Independent
1 Supervision and Encouragement
2 Limited Assistance
3 Extensive Assistance
4 Total Dependence
9 None Selected

ADL Support Provided

9

Notes:

OK

- First the Caregiver must select an ADL Category
- Caregiver must add ADL Performance Measures and Support Measures for the task by selecting the dropdown
- Caregiver can also add additional notes if desired



Chart Helper

Recap



- Through the functionality of the Chart Helper...
 - Caregivers can conveniently capture Electronic Logs
 - Information can easily be recalled at the End of Shifts, or as needed to transfer data to the Facility Record Keeping System



Watch Next



Recommendations of What to Watch Next

- Review the *Vital-Signs video* located within the *Chart Helper* Function
- Review the *Caregiver Tools videos* for additional functionality available from the Kiosk
 - *Menu Helper*: for food/kitchen requests
 - *Room Log*: a summary read-out of everything that happens in a room for a day
 - *Nurses Notes*: to send requests to a RN/LPN

